

BURDWAN**Overall scenario of the district**

Burdwan district is situated in the central point of south Bengal. It is surrounded by Birbhum, Murshidabad and Dumka of Jharkhand on the north, Nadia on the east, Hooghly, Bankura and Purulia on the south and Dhanbad of Jharkhand on the west.

As a result the district has locational advantages in terms of sourcing of raw materials and marketing of finish products.

The district constitutes of [as per district statistical handbook, 2009]

- ✓ Municipalities -9
- ✓ Municipal corporation -2
- ✓ Blocks - 31

The district ranks 9th in terms of literacy rate and 13rd in terms of sex ratio among all other districts of West Bengal.

Burdwan is one of the major paddy producing districts in the state of West Bengal.

The river system in Burdwan includes the Bhagirathi-Hooghly in the east, the Ajoy and its tributaries in the north and the Dwarakeswar, the Damodar and its branches in the south-west.

District Profile:**Population:**

According to Census Data (2011), the Total Population of the district is 77,23,663 out of which there are 39,75,356 males (51.47%) & 37,48,307 females (48.53%). Out of a total 640 districts in India, Burdwan is ranked 7th in terms of population. The population density in the district is 1100 persons per sq km.

Some of the major areas in terms of density of population (according to 2001 census) are:

- Burdwan(M) (12396 persons per sq. km),
- Katwa(M) (8393 persons per sq. km),
- Kalna (8153 persons per sq. km),
- Raniganj(M) (4740 persons per sq. km),
- Asansol(M.C) (3718 persons per sq. km)

Other major settlements in the district (in terms of total number of population) are Durgapur MC, Kulti (M), Jamalpur, Bhatar, Mongalkote. Major markets in the district are concentrated in the above areas.

Distribution of population over different age group (Census, 2001):

Age group	% of total population
0-4	8.76
05-24	41.67
25-59	42.88
60 and above	6.50

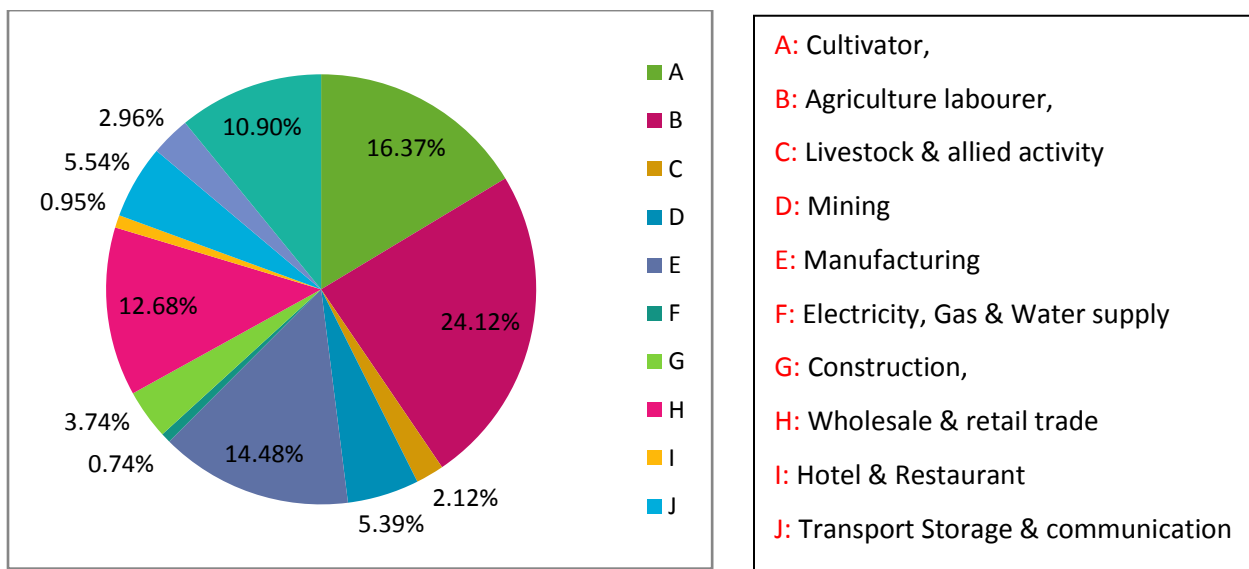
Source: Census data, 2001

Share of population belonging to age group around 25-59 is highest hence it can be target group for new entrepreneurs planning to market their products in the district.

Also considerable number, 6% total population, 68,95,514 (2001) living in the district are from outside of West Bengal, among them, notable states are:

- ✓ Bihar,
- ✓ Uttar Pradesh,
- ✓ Jharkhand
- ✓ Orissa
- ✓ Punjab

Work force constitutes 27.85% of total population and the distribution of the same is as follows:



Source: Census Data, 2001

The per capita income in the district was found out to be Rs 23,770/- during the year 2003-04.

Around 40% of total work fore depends on agriculture for their livelihoods at the same time a significant (14.5%) portion of work force are engaged in manufacturing sector which may be a favourable condition for setting up of new units in food processing.

Infrastructure:

The district is well networked with other parts of the states through:

Road ways:

- National Highway: NH 2
 - Lane: 4
 - Length of NH within the district: 55 KM
 - Connected other states: The highway touches the cities of Faridabad in Haryana, Mathura, Agra, Etawah, Bhoganipur, Kanpur, Allahabad, Varanasi, Mughalsarai in Uttar Pradesh, Mohania, Sasaram, Dehri-on-sone, and Aurangabad in Bihar, Barhi, Dhanbad in Jharkhand and Asansol, Durgapur, Burdwan, Kolkata in West Bengal.
 - Connected other districts: Howrah, Hooghly, N-24 Parganas
 - Blocks on the NH: Chanditala-I, Chanditala-II, Singur, Mogra-Chinsura, Pandua,
 - Connecting with other major settlements like: Burdwan, Durgapur, Ranijang, Asansol, Barakar

- National Highway: NH 2B
 - Lane: Intermediate lane road.
 - Length of NH within the district: 46 KM
 - The highway runs entirely within West Bengal
 - Connected other districts: Birbhum.

- NH 60
 - Lane: 2
 - Length of NH within the district: 32 KM
 - It runs from the junction with NH 5 at Balasore to NH 2. It passes through Jaleswar, Dantan, Belda, Kharagpur, Salboni, Bishnupur, Bankura, Gangajalghati, Mejia and Raniganj.
 - Connected other States: Orissa
 - Connected other districts: West Medinipore, Bankura, Birbhum, Murshidabad.
 - Connecting with other major settlements like: Jaleswar, Kharagpur, Bishnupur, Bankura

- State Highway (SH):
 - 8 SHs
 - SH-5 connects the district with Purulia, Bankura, East & West Medinipore.
 - SH-6 connects the district with Birbhum, Hooghly, Howrah.
 - SH-7 connects the district with Birbhum, Murshidabad, Hooghly, West Medinipore.
 - SH-8 connects the district with Purulia, Bankura, Nadia.
 - SH-9 connects the district with Bankura, West Medinipore.
 - SH-13 connects the district with Birbhum, Hooghly.
 - SH-14 connects the district with Birbhum, Nadia.
 - SH-13 connects the district with Hooghly, Howrah.

Source: West Bengal Public Works' Department

Railway:

Following four rail routes, connecting various railway stations in the district have passed through the district.

- Eastern Railway Howrah-Burdwan main line.
 - It runs through Serampore, Chandernagore, Chinsurah and Bandel.
- Howrah-Burdwan cord line
 - It runs through Dankuni, Baruipara, Kamarkundu and Massagram
- Sealdah-Burdwan main line
 - It runs through DumDum, Naihati, Bandel, Memari.
- Sealdah-Burdwan chord line
 - It runs through Bally, Dankuni, Dhaniakhali, Nabagram, Shaktigarh.

Other social infrastructure:

- Technical Education:
 - Engineering College: 10
 - Polytechnics: 07
 - ITI: 03
- Health:
 - Standard health network like district hospital, block hospitals and Private nursing home/clinics are observed
- Entertainment:
 - Standard cinema halls and parks are observed.
Source: District Statistical Handbook, 2009
- Banking Infrastructure:
 - Lead Bank - UCO Bank and following are the other banks found in the district

Name of Bank	No. of Branches
SBI	110
UBI	53
UCO	44
BOI	32
Allahabad	31
CBI	28
OBC	16
PNB	16
Union Bank of India	11
Syndicate Bank	11

Name of Bank	No. of Branches
Axis	10
Canara	10
Indian Bank	8
BOB	7
HDFC	6
ICICI	5
IDBI	5
IOB	4
Andhra Bank	4
Punjab & Sindh Bank	3
Total	414

Sources: Individual bank's website

Power Infrastructure:

Power Generation station:

Power station	Installed Capacity (MW)	Available capacity (MW)
Durgapur Thermal Power Station	350	350

Supply Stations (SS) are:

Sl. No	SS name	Capacity (KVA)
1	Durgapur	400
2	Parulia (PG)	400
3	Asansol	220
4	Waria (DVC)	220
5	DPL	220
6	Satgachia	220
7	Ukhra	132
8	Mankar	132
9	Mahachanda	132
10	Kalna	132
11	Katwa	132
12	Raina	132

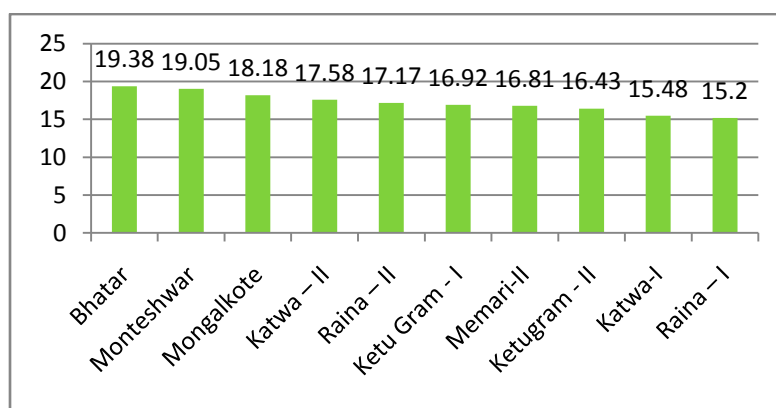
Total	2472
--------------	-------------

Source: West Bengal State Electricity Transmission Company Limited

Ground water:

It has been observed that one of the major sources of water for food processing units in West Bengal is ground water.

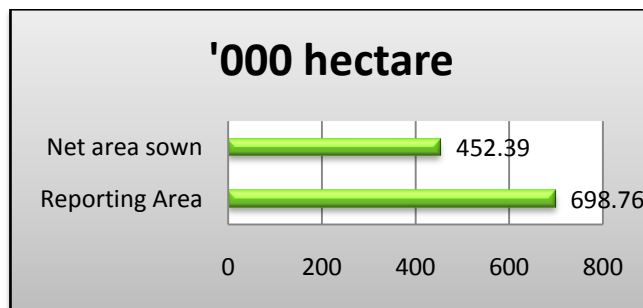
Blocks with average depth of ground water more than 15 meters during April, 2011 are:



Source: State Water Investigation Directorate

Agriculture & Horticulture:

Reporting area in the district is 698760 hectare. Net sown area is 64.74% of total reporting area. Hence the district is rich in agricultural production. All the blocks of the district are linked with major irrigation facilities.



Source: District Statistical Handbook, 2009

Agriculture, Horticulture and Livestock production:

Position of the district in terms of State's production:

Burdwan	Crops/ Veg/ Fruits/ livestock	Rank in the state	Production in '000 MT	% to states' production
Agricultural produce	Paddy	1st	3076.88	14
	Potato	3rd	2268.24	16
	Til (Sesame)	5th	13.119	09
	Sugarcane	5th	86.49	09
Vegetables	Cucurbits	1st	159.30	7.48
	Elephant's Foot	3rd	19.05	10.60
	Aurum	3rd	27.38	9.21
	Onion	5th	16.95	5.69
	Ladies Finger	5th	61.23	7.10
Livestock & Live stock product	Cattle	2nd	1730811 no.	9.02
	Goat	2nd	1408292 no.	9.35
	Pig	2nd	99927 no.	12.27
	Poultry (Duck & Fowl)	3rd	6403070 no.	10.01
	Bovine Milk	1st	562.27	12.98
	Meat	3rd	43.38	7.52
	Egg (Duck & Fowl)	3rd	4241.85 Lakh	10.60

Source: Evaluation Wing, Directorate of Agriculture GoWB 2009-10, Bureau of Applied Economics & Statistics, Livestock Population Handbook 2009, WBSFPI and horticulture.

Other than the above items following fruits and vegetables are also available in significant quantity in the district:

VEGETABLES

Cauliflower

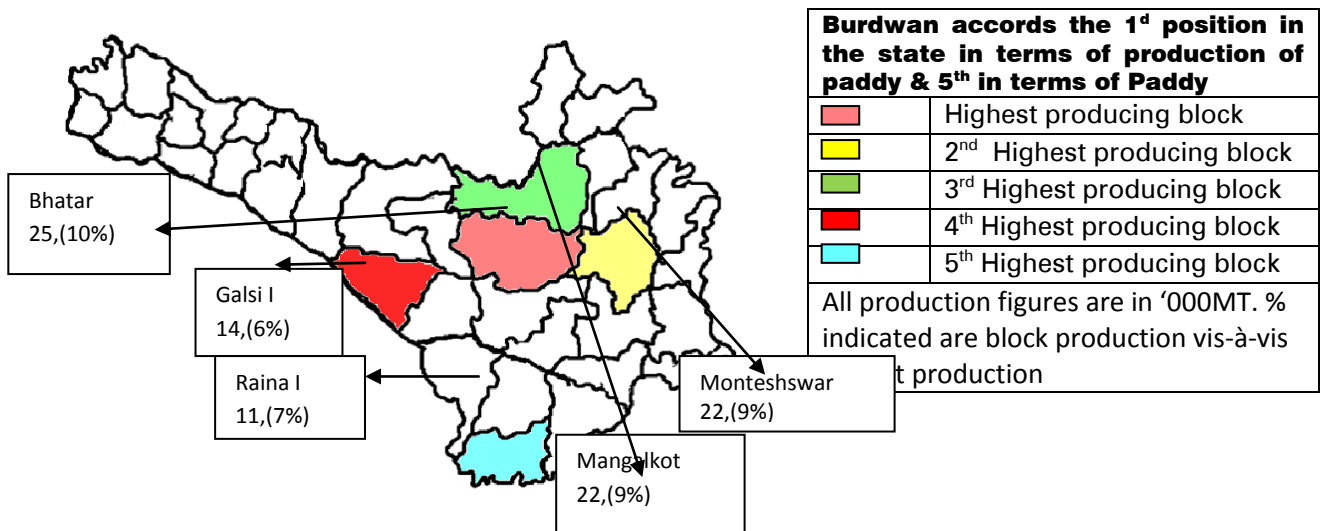
FRUITS

Mango
Papaya
Banana
Guava

Agricultural produce:

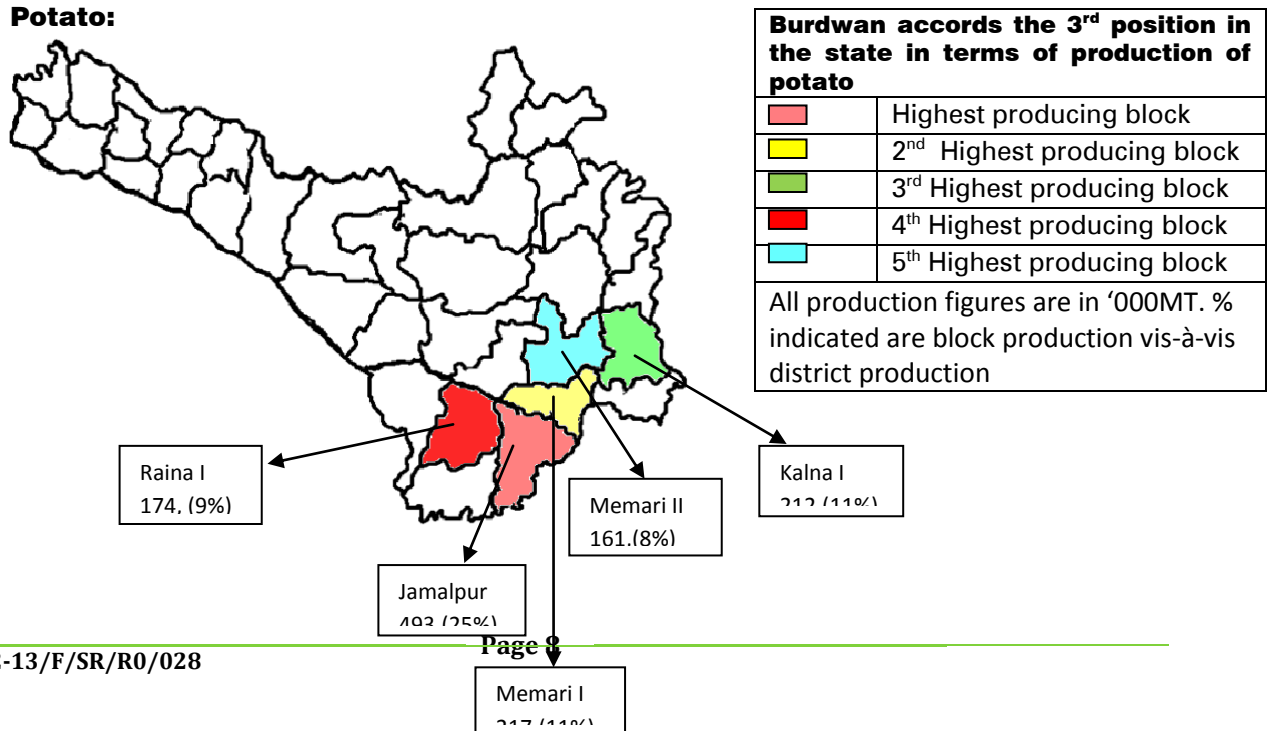
➤ **Paddy:**

Top five growing blocks with their growing share in% viv-a-vis total production in the district:



Sources: Office of Deputy Director of Agriculture, 2009-10

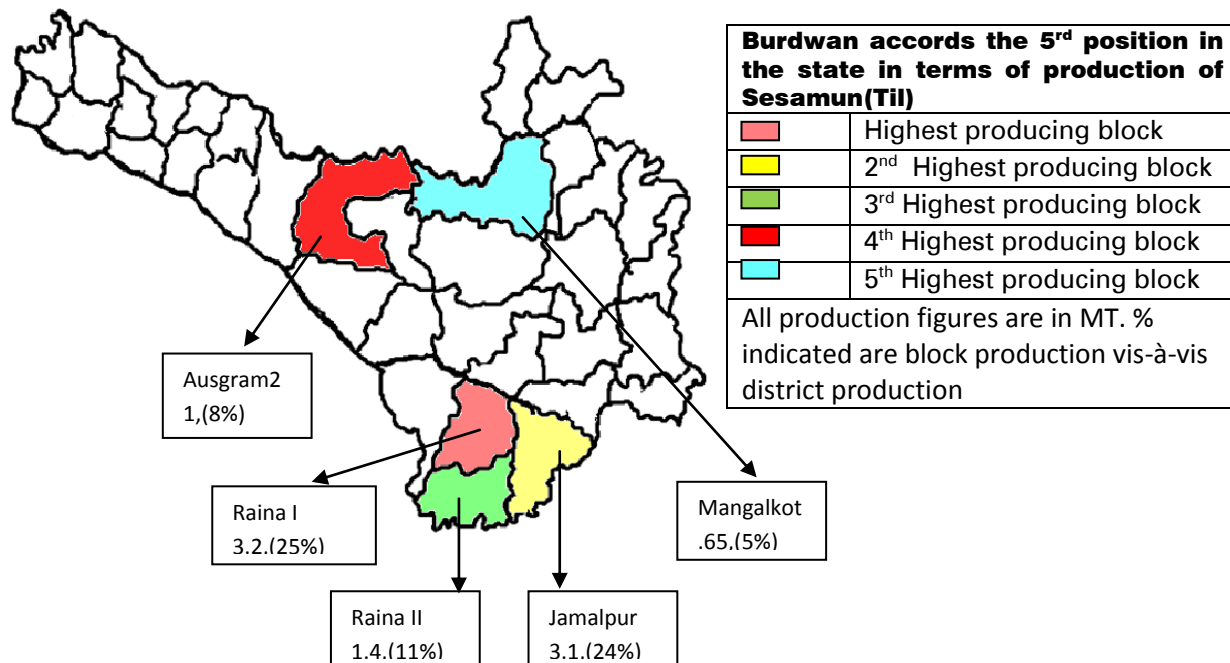
➤ **Potato:**



Sources: Evaluation wing, directorate of agriculture, West Bengal, 2009-10

➤ **Til (Sesamum):**

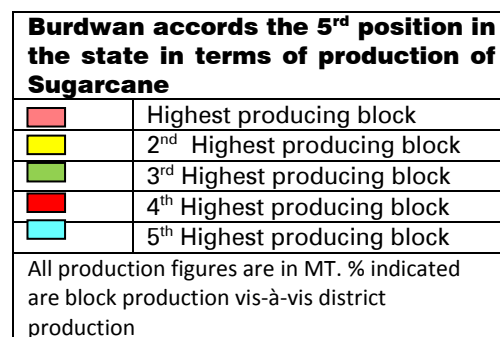
Top five growing blocks with their growing share in% viv-a-vis total production in the district:

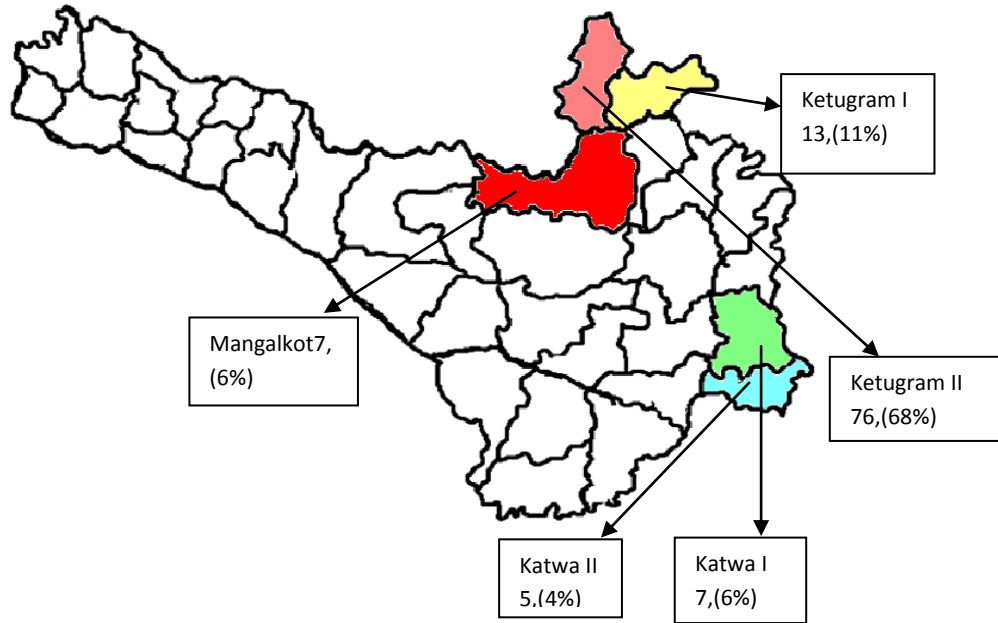


Sources: Office of Deputy Director of Agriculture, 2009-10

➤ **Sugarcane:**

Top five growing blocks with their growing share in% vis-a-vis total production in the district:

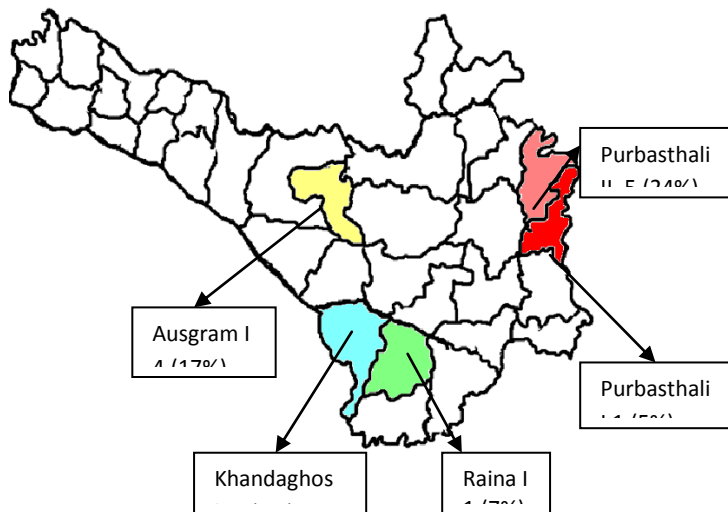




Sources: Office of Deputy Director of Agriculture, 2009-10

Vegetables:

- **Elephant's Foot:**
Major producing blocks:



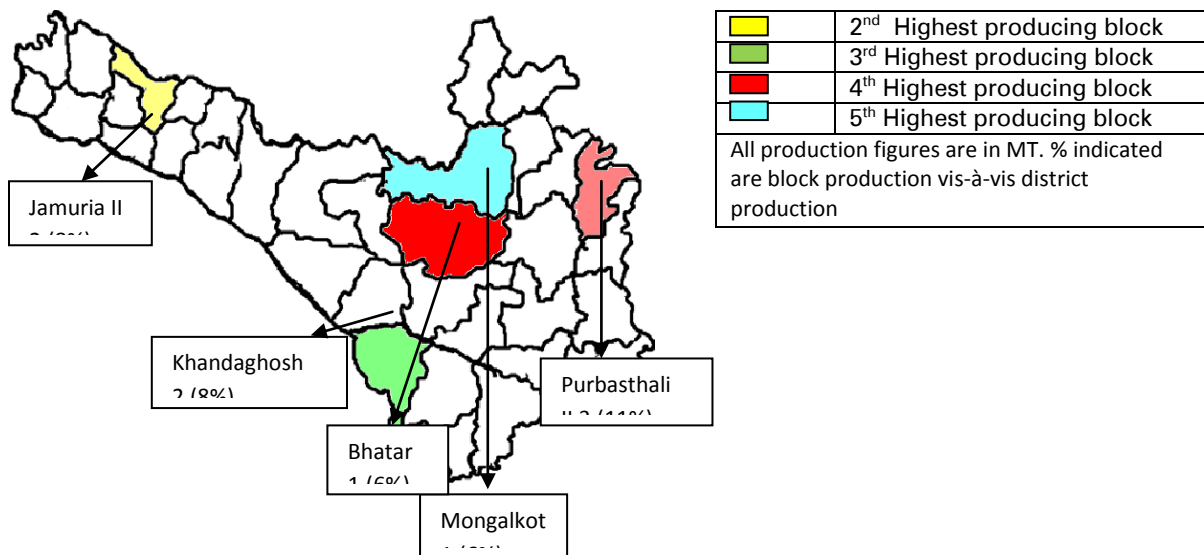
Burdwan accords the 5th position in the state in terms of production of Elephant's foot	
■	Highest producing block
■	2 nd Highest producing block
■	3 rd Highest producing block
■	4 th Highest producing block
■	5 th Highest producing block

All production figures are in MT. % indicated are block production vis-à-vis district production

Sources: Office of Deputy Director of Agriculture, 2009-10

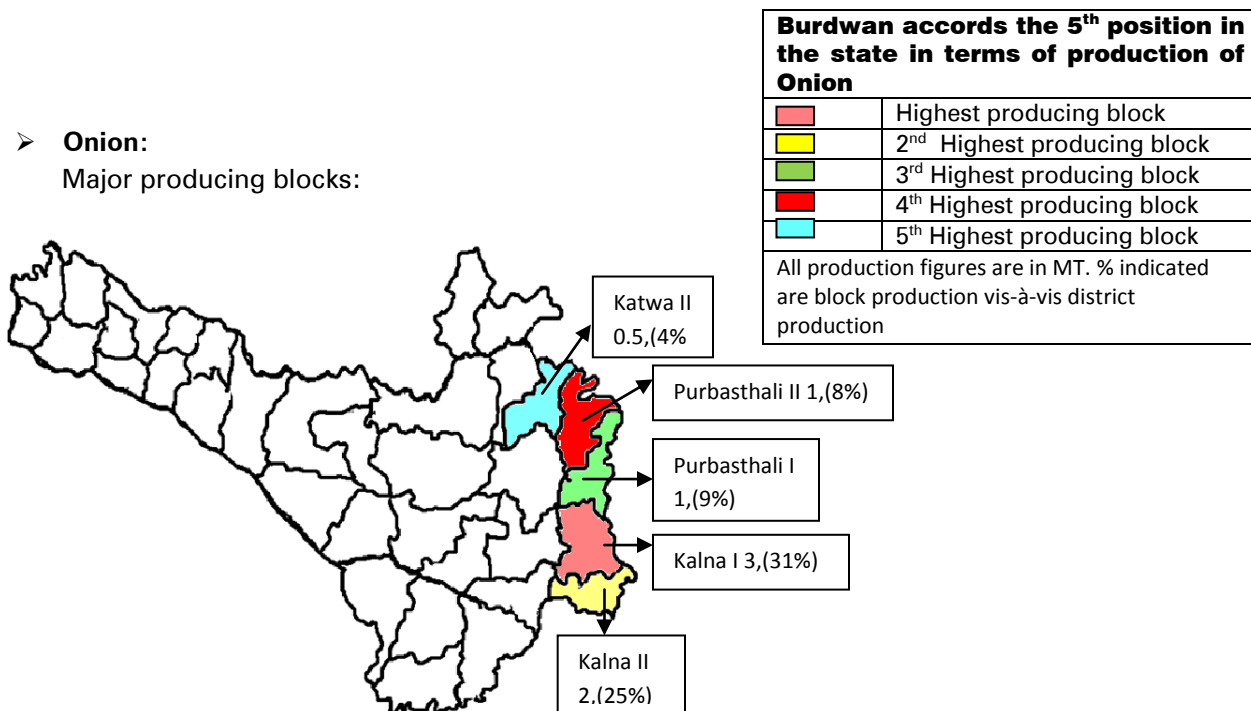
- **Aurum:**
Major producing blocks:

Burdwan accords the 3rd position in the state in terms of production of Aurum	
■	Highest producing block



Sources: Office of Deputy Director of Agriculture, 2009-10

➤ **Onion:**
Major producing blocks:



Sources: Office of Deputy Director of Agriculture, 2009-10

Cattle:

Top 5 blocks:

Name of the block	Total Cattle	% w.r.t dist
Bhatar	115115	6.65%
Mongolkote	99930	5.77%
Bardhaman I	81837	4.73%
Monteswar	80156	4.63%
Jamalpur	78446	4.53%

Source: Animal resource development dept. west Bengal, 2009

Goat:

Top 5 blocks:

Name of the block	Total Goat	% w.r.t dist
Bhatar	82034	5.83%
Jamalpur	80743	5.73%
Khandaghosh	77195	5.48%
Bardhaman I	73687	5.23%
Monteswar	68459	4.86%

Source: Animal resource development dept. west Bengal, 2009

Pig:

Top 5 blocks:

Name of the block	Total Pig	% w.r.t dist
Barbani	6435	6.44%
Kalna I	5916	5.92%
Ausgram II	5824	5.83%
Katowa I	5500	5.50%
Jamalpur	5044	5.05%

Source: Animal resource development dept. west Bengal, 2009

Poultry:

Top 5 blocks:

Name of the block	Total poultry	% w.r.t dist
Bhatar	743955	11.62%
Faridpur-Durgapur	560278	8.75%
Ausgram-II	504121	7.87%
Raina-II	446156	6.97%
Mongalkote	320694	5.01%

Source: Animal resource development dept. west Bengal, 2009

Major agricultural/ horticultural markets:

Regulated market:

- Burdwan Sadar Regulated Market.
- Katwa Regulated Market.
- Asansol Regulated Market.
- Kalna Regulated Market.

Storage facilities:

- Potato storage:
 - 99 cold storage having total capacity 12979475 quintal
- Multipurpose cold storage:

Name and address of the Cold Storage	Capacity in Qntls.
Sahapur Multipurpose Cold Storage	15,177.00
E.R. Cold Storage, P.O. Saloon, Dist. Burdwan (Multipurpose + Potato)	188,600.00
Sri Durga Cold Storage, P.O. Memari, Dist. Burdwan (Multipurpose + Potato)	138,887.00
Burdwan Cold Storage, P.O. Jateram, Dist. Burdwan (Multipurpose + Potato)	105,936.00
B.D. Cold Storage PVT. Ltd., P.O.- Sahatpur Dist. Burdwan	101,667.00
Jayswal Cold Storage (Multipurpose), P.O. Raniganj, Dist. Burdwan	67,659.00
Asansol Cold Storage, Asansol, Dist. Burdwan (Multipurpose)	80,000.00
Katwa RMC	870
Kalna RMC	870
Asansol RMC	870

Source: Animal resource development dept. west Bengal, 2009

Chilling Plants/ Bulk Milk Cooler:

There are 11 chilling plants/ Bulk Milk Cooler (BMC) in the district. Capacity of the units are given below:

Name of the Chilling plant	Location	Capacity (TLPD)
Kanchgaria (BMC)	Kanchgaria	2
Katwa	Katwa	4
Saktigarh	Saktigarh	2
Kusumgram	Kusumgram	10
Gangatikuri (BMC)	Gangatikuri	0.5
Adampur (BMC)	Adampur	0.5

Name of the Chilling plant	Location	Capacity (TLPD)
Angoria (BMC)	Angoria	0.5
Saknara (BMC)	Saknara	2
Kandra (BMC)	Kandra	1
Rakshitpur (BMC)	Rakshitpur	0.5
Nimar (BMC)	Nimar	0.5
Total		23.5

Source: West Bengal Co-operative Milk Producers' Federation Limited, 2011

Food Processing Industries:

New units registered since 2007 is as given below. According to definition of MSME act 2006, the distribution of the units is as follows:

Units	2007-08	2008-09	2009-10	2010-11	2011-12	Total
Micro	39	46	85	50	30	250
Small	10	18	34	33	8	103
Total	50	64	119	83	38	354

Source: DIC and I-WIN data

Sector wise and year wise distribution of the units is as follows

Sector	2007-08	2008-09	2009-10	2010-11	2011-12	Total
Cereals & Pulses Processing	13	10	4	2	6	35
Confectionery/Biscuit	5	13	3	3	5	29
Diary & Milk	3	2	3	5	2	15
Fish Processing			1			1
Fruits & vegetable processing		2		1	3	6
Oil	7	10	9	5	2	33
Others	4	2	3	1	2	12
Packaged Drinking Water	1	1				2
Paddy Processing	13	18	92	59	14	196
Snacks/Pasta	1	2	1	2	3	9
Soft Drinks			1			1
Spices	3	4	2	5	1	15
Total	50	64	119	83	38	354

Source: DIC and I-WIN data

Employment scenario in the food processing industry of the district is shown in the table below:

Employment	2007-08		2008-09		2009-10		2010-11		2011-12		Total	
	Male	Female	Male	Female	Male	Female	Male	Female	Male	Female	Male	Female
Cereals & Pulses Processing	61	5	110	0	12	10	7	0	32	0	222	15
Confectionery/Biscuit	81	2	793	2	43	1	11	1	52	1	980	7

Employment												
Sector	2007-08		2008-09		2009-10		2010-11		2011-12		Total	
	Male	Female	Male	Female	Male	Female	Male	Female	Male	Female	Male	Female
Diary & Milk	4	0	13	0	12	0	19	1	9	0	57	1
Fruits & vegetable processing			10		10	0	4	7	4	22	28	29
Oil	23	0	78		38	0	17	0	21	1	177	1
Others	14	3	12		2	0	6	0	10	0	44	3
Packaged Drinking Water	6	1	7								13	1
Paddy Processing	201	21	200	21	568	911	911	34	156	4	2036	991
Snacks/Pasta			13	0	6	0	7	0	15	1	41	1
Soft drinks					3	0					3	0
Spices	15	2	22	3	6	0	29	1	13	0	85	6
Total	405	34	1258	26	700	922	1011	44	312	29	3686	1055

Source: DIC and I-WIN data

Hence a total of 4741 people are directly involved in the food processing industry for their livelihoods. Out of which 22.25% is female worker.

Food processing units under FSSAI[Erstwhile FPO]:

No. of units in the district which acquired FPO license under different food category is given below:

Group Name	No. of Units
Jam Group, Squash Group, Tomato sauce, Vegetable Sauce, Non Fruit-Vinegar, Pickles, Chutney ,Non Fruit Jelly,Sauces(Other than Tomato & Soya)	3
Synthetic Sweetened Aerated Water(With out Fruit Juice/Pulp) in Pet	1

Source: Food Safety and Standards Authority of India Office, eastern region

Some of the big players having manufacturing unit in the district are:

Name of the company	Product
Aditi Oil Limited	Refined veg oil
	blended veg oil
	vanaspati
Bansal Oil Extraction Pvt. Ltd	Rice bran oil

Source: DIC I-Win data and dept. of C & I

Investment Opportunities:

- A Rice Bio Park can be set up where rice husk can be utilized for power generation. A report has been prepared in this regard.
- Numbers of milk chilling plant can be set up in the district to tap the milk produce in the district.
- Cold storage for sweet water fish preservation.
- 2 Cold Storages for Potatoes with an average capacity of 1.5 Lakh MT.
- A shift from the Non Processable to Processable forms of Potato.
- There is an existing slaughter house at Durgapur, this can be modernized under the scheme for Modernization of Abattoir.
- Onion Storage house: Balagarh Model can be replicated
- Chilling plants of capacity 10-20 TLPD can be set up here.